

FCEM&HS Report



Countywide Extreme Heat Plan Due Soon

July 19, 2010

Franklin County Emergency Management and Homeland Security has partnered with local jurisdictions and agencies to create a countywide plan for responding to an extreme heat emergency. Specifics of the plan will include how the public will be informed, how to maximize and coordinate countywide emergency resources, and how to avoid duplication of effort and build response capabilities. The plan will be promulgated in August.

Extreme heat is new to the list of hazards in the recently completed 2010 risk assessment for Franklin County and is the No. 1 non-severe-weather-related killer in the U.S.

[More Details](#)



CERT, Disaster PDA Teams Promoted at Franklin County Fair

FCEM&HS and Franklin County CERT (Community Emergency Response Team) are staffing a booth at the Franklin County Fair, July 17- 24, in the Dellinger Building on the county fairgrounds in Hilliard to inform the public about how citizen volunteers can help the community recover after a disaster.

Visitors to the booth will learn how to become a volunteer Preliminary Damage Assessment (PDA) specialist to help document the severity and magnitude of a disaster. FCEM&HS will offer visitors interested in volunteering as a PDA specialist an opportunity to receive a **free weather alert radio** from Midland Radio Corporation.

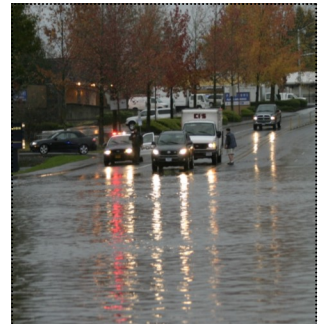
[More Details](#)



Comment Period Until July 31 For Risk Assessment

FCEM&HS recently updated the Risk Assessment for Franklin County. The update was the first since 1996. The public is encouraged to read the report online at www.franklincountyohio.gov/emahs and send comments via e-mail to the agency at fcem&hs@franklincountyohio.gov. Deadline for comments is July 31. The agency, working with subject matter experts, outlined and ranked the 16 most likely natural and man-made hazards that Franklin County faces.

[More Details](#)



New CERT/ Volunteer Coordinator for Agency

Christopher Williams is the new CERT/Volunteer Coordinator for FCEM&HS, coming to FCEM&HS with a strong background in emergency management.

His experience includes six years as a FEMA Disaster Reservist, helping in Hurricane Katrina and the 2008 Midwest floods, as well as volunteer work with the Community Emergency Response Team program and Rapid Assistance to Community Emergency Response Team in Delaware, Ohio.

[More Details](#)

FCEM&HS

Michael R. Pannell, Director
5300 Strawberry Farms Blvd.
Columbus OH 43230-1049
Phone 614-794-0213
Fax 614-882-3209

On the Web at <http://www.franklincountyohio.gov/emahs>

Franklin County Emergency Management and Homeland Security, a local government agency, coordinates county-wide emergency/disaster planning, education, warning, response and recovery.

To remove your name from our mailing list, please [click here](#).

Questions or comments? E-mail us at mdanthon@franklincountyohio.gov or call 614-794-0213.